



# M/V Geo Endeavour



*Geo Endeavour - Geophysical Survey Vessel*



Fugro Survey Africa of Cape Town, South Africa operates the survey vessel M.V. Geo Endeavour. Geo Endeavour has a permanently mobilised analogue geophysical survey spread, ready for rapid deployment to survey locations all over Africa.

M/V Geo Endeavour, built in 1985 (rebuilt in 1998 and refurbished in 2008) maintained to the high standards demanded by our industry, provides Fugro Survey Africa's clients with a reliable and well appointed survey vessel with capability of performing geophysical surveys as well as environmental surveys.

The vessel is equipped with a full suite of analogue geophysical survey equipment and is ideal for performing shallow water offshore surveying activities along the West, East and South Africa coastline. A fully equipped small survey launch is mobilized on the Geo Endeavour for 12 hours operation. This enables surveying close to the coast and in very shallow areas.

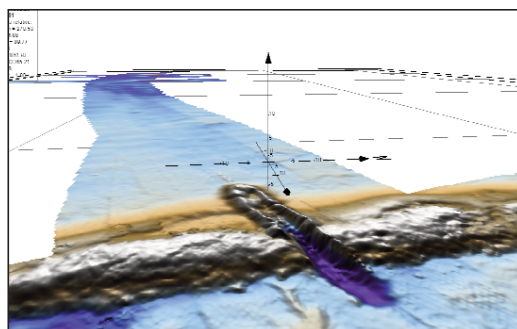
Clients within the oil and gas industry, the cable sector and government agencies are among the clients utilising M/V Geo Endeavour to obtain accurate geophysical data for permitting, planning, design activities and engineering within the offshore industry.

Fugro Survey Africa is working according to the international quality standard ISO 9001:2000 and operates in accordance with our Management System. The Management System has the vital parts Health, Safety and Environment integrated. Combined these systems conform to all national and international legislation as well as industry guidelines.

Fugro Survey Africa is a member of the multinational Fugro Group of companies with more than 250 offices in 58 countries. Clients can benefit from individual and collective experience of hundreds of survey professionals at Fugro Companies worldwide.



*Custom-built catamaran survey spread for shallow water projects*



*Multibeam image from pipelay operations*

- Angola
- Argentina
- Australia
- Austria
- Azerbaijan
- Belgium
- Bermuda
- Brazil
- Brunei Darussalam
- Cambodia
- Canada
- China
- Congo
- Denmark
- Egypt
- Equatorial Guinea
- France
- Gabon
- Germany
- Ghana
- Hong Kong
- India
- Indonesia
- Italy
- Japan
- Kazakhstan
- Kuwait
- Lebanon
- Libyan Arab Jamahiriya
- Luxembourg
- Macao
- Malaysia
- Mauritius
- Mexico
- Namibia
- Netherlands
- Netherlands Antilles
- New Zealand
- Nigeria
- Norway
- Oman
- Pakistan
- Poland
- Qatar
- Russian Federation
- Saudi Arabia
- Singapore
- South Africa
- Spain
- Switzerland
- Thailand
- Trinidad and Tobago
- United Arab Emirates
- United Kingdom
- United States
- Venezuela
- Viet Nam

## Multi-role Geophysical Survey Vessel

<b>NAME</b>	Geo Endeavour	<b>PORT</b>	Panama City
<b>CLASSIFICATION</b>	DNV	<b>IMO No</b>	8409927
<b>OWNER</b>	Geo Endeavour Inc.	<b>CALL SIGN</b>	H02522
<b>BUILDER</b>	China Ship Building & Eng. co	<b>FLAG</b>	Panama

<b>Dimensions</b> LOA 45.7m Breadth 10.0m Draught 2.44m Tonnage 514 GRT; 71NRT  <b>Machinery</b> Main engine 2x M.A.N 9I20/27 Propulsion Total 2450 BHP  Bow thrusters Electric 156 KW (ccp)  Speed (max) 12.5Kts Speed (cruising) 11.0Kts  Electrical Power 3 x 200KVA 440V 60Hz 3 phase AC  <b>Capacities</b> Fresh water 70 Tons & onboard water maker capable of producing 7500lt per day Fuel oil Capacity 130 Tons  <b>Deck Machinery</b> Deck crane Hydraulic telescopic pedestal. Crane with 360 degrees traverse, max SWL 10 Tons @ 6M / 1.5 Tons @ 15M  A-Frame SWL 2,000 Kg	<b>Mooring System</b> 3 x Electro hydraulic winches (2 in bow, 1 in stern) each with 600 M 32 mm wire rope & 750 kg Anchors  <b>Control and Navigation</b> Auto Pilot 1 No. Tokyo Keiki Radar 3 No Gyrocompass 1 No Tokyo Keiki GPS Trimble NT200  Echo sounder Furuno 881 Digital  <b>Communications</b> VHF 2 no. SSB HF Radio 1 no.  Navtek T&T 3020C Lokota  Inmarsat Nera Fleet 77 VSAT Email  <b>Accommodation</b> (Air-conditioned)  Crew 10 persons Passengers 13 persons  <b>Clear Deck Space</b> 160 m2 <b>Deck Load Density</b> 6 Tons / m2	<b>Safety</b> E.P.I.R.B. 2 x McMuroo E3 SART 2 x Lokata 91M Life raft Radio 1 No FRC & Davit 2 x 20 persons Lifejackets 35  <b>Survey Systems</b> Echosounder Simrad EA400 Side scan Sonar Geoacoustics Sub Bottom Profiler ORE/Seabed 3010mp Boomer Applied Acoustics  Magnetometer Ixsea Gyro SG Brown / Octans  CTD Sensordata CTD Data Acquisition GLog / GPlot System Navigation System Starfix Navigation Suite  USBL Tracklink  Online/offline Fugro Starfix-Seis/ Navigation Systems Fugro Starfix-Proc  Satellite Positioning Starfix HP and DGPS\ SkyFix XP  Moonpool 90 x 60 cm  Small survey spread Seamaster or for shallow water Custom built projects Catamaran  <b>Optional Survey</b> 3 m core sampling <b>Systems</b> UHR system Hi-Res System
---	--	--

Fugro Survey Africa (Pty) Ltd.  
 Unit 24, Woodbridge Business Park, Koeberg Rd, Milnerton, 7441  
 P.O. Box 487, Paarden Eiland, 7420 Cape Town, South Africa  
 Tel: +27 21 527 8900 Fax: +27 21 527 8901

[www.fugro-africa.com](http://www.fugro-africa.com)

